



Chippewa Chatter

Chippewa County 4-H Newsletter

Dear 4-H Friends & Family:

Below you will find some tips for communication. I hope you find them useful when talking to your children and others at various 4-H events, meetings and preparing for the fair. These tips were written by Laurie H. Rogers, Children's Advocate, Safer Child Inc. www.saferchild.org

Tips for Communicating Well

Be a good listener and remember what you've been told: Actively listen to what you're being told. Look your child in the eyes; don't try to do something else at the same time.

Don't brush off excitement: If your child walks in the door with something to tell you—put down the paper or book, turn off the television, put down the phone and listen.

Take advantage of opportunities: Good times to talk in the car, at the dinner table, after a bedtime story, during picnics, on a walk, while shopping, or while playing a game.

Remember that children and teens don't talk or think like adults do: Try to make communications gentle. Often less is more (as in less talking on your part and more listening). If their eyes glaze over, you're probably doing too much talking and not enough listening.

Don't interrupt: Allow your child to finish sentences and while thoughts. Sometimes it will take your child a while to get the thought out. Don't push or rush it and resist the urge to finish the thought for your child.

Ask open-ended questions: Ask questions that require some thought, not just a "yes" or "no". If you don't understand what was said, try to elicit more information. Paraphrase what you think was meant and ask if that's right.

Stay positive: If your child is trying something hard, avoid rushing to predict failure. Your child will seek to meet your expectations, so be positive, supportive and encouraging.

Apologize: When you goof up, apologize in a sincere manner. This teaches your children that you respect them and that making a mistake isn't fatal. When your child teaches you something, acknowledge it: It's OK to learn from your children. It will happen, and it's a good idea to acknowledge it.

Say these word out loud frequently - "I love you." "You're beautiful." "I'm proud of you." "I'm glad you're mine." These are phrases and sentiments your child needs to hear. While you're at it, teach your children to like and love themselves—as much as they would like or love someone else.

Sincerely,

Jackie Johnson, 4-H Youth Development Agent

INSIDE THIS ISSUE

Calendar	2
Cultural Arts	3
Leadership	3
Club News	4
Natural Sciences/ Resources	4
Mechanical Science	5
Animal Science	5
Opportunities/ Upcoming Events	6
4-H On The Air	7
The Oz Run	8
Cloverbud Corner	9
Thank yous	10
Dairy Poster Contest Rules	11
4-H Shirt Order	12-13
Engineering Challenge Rematch	14
4-H Summer Camp Registration Form	15
Shooting Sports Banquet Program	16-17
Tractor Safety Brochure	18-19
Chippewa County Dog Obedience	20
Award Nomination Forms	21-24
Leaders Council Bylaw Revisions	25-32
Youth Expo Application	33-34
Ladysmith 4-H/FFA Small Animal Swap	35
Northwest Region 4-H Agility Fun Match	36-37

Calendar of Events 2016



May 2016

- 5 Dog Obedience Training, Youth Building, Fairgrounds
- 6-7 Camp counselor Training, 5:00 p.m. Friday, May 6th - 4:00 p.m. Saturday, May 7th, Kamp Kenwood
- 7 Dairy Judging Practice, 10:00 a.m., Woodmohr Jersey's, 12518 155th Avenue, Bloomer
- 9 Snack Bar Committee Meeting, 6:30 p.m., Courthouse Room 13
- 10 4-H Leaders Council Meeting, 6:30 p.m., Courthouse, Room 13
- 10 4-H Volunteer of the Year, Friend of 4-H, and Community Servant Award Nominations due
- 12 Dog Obedience Training, Youth Building, Fairgrounds
- 16 4-H/FFA Horse Program Meeting, 6:45 p.m., Courthouse, Room 3
- 16 Horse Program Coggins & Vaccination Papers due
- 17 State Fair Dairy Meeting, 7:00 p.m., Courthouse Room 3
- 19 Dog Obedience Training, Youth Building, Fairgrounds
- 23 Dairy Judging Practice, 7:00 p.m., Scientific Holsteins, 11838 120th Avenue, Chippewa Falls
- 26 Dog Obedience Training, Youth Building, Fairgrounds
- 27 Photos for 4-H Slide Show due today
- 28 The Oz Run - Volunteers NEEDED!

June 2016

- 2 Dog Obedience Training, Youth Building, Fairgrounds
- 6 4-H/FFA Quality Meat Animal Program Meeting, 8:00 p.m., Courthouse, Room 3.
- 9 Dog Obedience Training, Youth Building, Fairgrounds
- 14 4-H Leaders Council Meeting, 6:30 p.m., Courthouse, Room 13
- 16 Dog Obedience Training, Youth Building, Fairgrounds
- 20 4-H/FFA Horse Program Meeting, 6:45 p.m., Courthouse, Room 3.
- 20-23 Wisconsin & 4-H Youth Conference, Madison.
- 23 Dog Obedience Training, Youth Building, Fairgrounds
- 30 Area Animal Science Days, St. Croix County Fairgrounds, Glenwood City, WI
- 30 Dog Obedience Training, Youth Building, Fairgrounds

July 2016

- 7 Dog Obedience Training, Youth Building, Fairgrounds
- 13-17 Northern Wisconsin State Fair, Chippewa Falls
- 24-27 4-H Overnight Summer Camp, Kamp Kenwood
- 27 4-H Summer Day Camp, Kamp Kenwood
- 28-31 Bloomer Community Fair, Bloomer
- 29-31 Cadott Nabor Days, Cadott

4-H Forms Are Available on the Web!!

Did you know that many 4-H forms are available right on your own computer? Just follow the link:

<http://chippewa.uwex.edu/4-h-youth-development/4-h-projects/>

Select the category and print out what you need! All forms are still available from the Extension Office for your convenience just gives us a call or drop in during office hours.



Remember to use the "free media" we are offered with 4-H On the Air! There are still time slots available for your club to highlight upcoming events or 4-H itself!

Cultural Arts

Drama

CORRECTION: It has been brought to our attention that we inadvertently mentioned the wrong Benjamin as the County Best Actor. The County Best Actor Award was given to **Benjamin Ream** with **Mile Corner**. Congratulations to Benjamin for a fine performance!



Leadership

Leaders Council

The next Leaders Council meeting will be held on Tuesday, May 10, 2016, at 6:30 p.m. in the Courthouse, Room 13. It is important for every club to have a representative at this meeting. Action will be taken on the proposed bylaws revisions at this meeting. See bylaws in this newsletter for noted revisions.

4-H On-The-Air

There are still openings for "4-H On-The-Air" interviews with Bob Bosold. This is free marketing, reserve your club's time today! We still have several spots available. Please consider reserving a spot to highlight your club activities.

Snack Bar Committee Meeting

The Snack Bar Committee will meet on Monday, May 9, at 6:30 p.m. in the Courthouse Room 13 to schedule shifts. All clubs that have representation will have shift preference. Letters were sent to Snack Bar Coordinators to respond with shift preference by May 1, 2016.



Dairy Poster Contest

All 4-H members in Chippewa County are eligible to enter this county 4-H dairy promotion poster contest. This contest is open to ALL 4-H MEMBERS, not just dairy project members. More information is within this newsletter. We look forward to your entries!

Dress-A-Calf Contest

The Chippewa County Junior Holsteins will be hosting a "Dress-A-Calf" contest on Wednesday, July 13 at the NWSF at 8:00 p.m. Participants have until noon on July 13th to register. More details are available in

the fair book under Department B-1 or by contacting Erica Ullom as tehfullom@bloomer.net.

4-H Marketing/Resource Information

We are all in this together; therefore, we want you to have the resources to market 4-H too. Follow the link at <http://www.4-h.org/resource-library/4H-marketing-online-resource-center/4H-campaign-assets/> for some great materials to use for promoting 4-H. Whether you are helping encourage new members or looking for materials to help you teach youth about a topic, you may find some support on this site. We thank you for all that you do to ensure everyone knows about the great opportunities for youth through 4-H.

Chippewa County 4-H T-shirts and Sweatshirts

In an effort to continue to promote the Chippewa County 4-H program we are offering the opportunity for members to purchase t-shirts and/or sweatshirts with this year's 4-H slogan: "4-H Grows Here". T-shirts and sweatshirts will be available in youth XS-XL and adult sizes from S-5XL. Additional fees will apply to sizes over XL. Colors offered are Irish green with white print, Smoke Grey with black print and Black with green print. T-shirts will be \$10.00 for both youth and adult XL with sweatshirts being \$20.00 for both youth and adults up to XL. For each t-shirts size over XL there will be an additional \$1.00 fee. For each sweatshirt size over XL there will be an additional \$2.50 fee. Please note we must have a minimum order of 50 t-shirts/sweatshirts to place this order. All orders will be due to the Extension Office by Friday, May 27, 2016. Please ensure your order is what you want, there will be no exchanges or returns. **No** orders will be placed until payment is received. The order form with additional information related to sizing is included in this newsletter.

Club News

Haycreek Ramblers by Abi Pieper

The March meeting was held at the Tilden Town Hall with old business discussions included review of club bylaws and work time for record books. New business discussions included shooting sports banquet and the club trip. Demonstrations were provided by Eric Benson and Hunter Hilger regarding birdhouses.

The April meeting was held at the Tilden Town Hall with old business discussions regarding the purchase of envelopes for the record books and the club trip. New business discussions included decision to sponsor a Quality Meat Animal Program trophy. Demonstrations were provided by Sophie Hoffman on Guinea Pigs, Andrew Plendl regarding positions in air rifle and Autumn Anderson regarding crocheting.

Howard-Wheaton by Bryce Kragness

The April meeting was held with old business discussions related to the Volleyball Tournament, Cultural Arts Festival and the Colfax and Chippewa Fair weigh ins. New business discussions included snack bar schedule and club shirts. Advisors report consisted of 4-H On the Air and upcoming date reminders.

Mile Corner by Erin Crowell

The April meeting was held at the Bloomer Baptist Church. New business discussions included snack bar schedule, actors/actresses going to state fair, highway pick up date. Ian Shoebridge provided a demonstration about Clover College. Educational program today was painting which was led by Alethea and Terri Brandt. Lunch was a potluck.

Sunnyside by Kianna Prince

The April meeting was held at the Wheaton Town Hall. Old business discussions included the Drama & Cultural Arts Festival results, pancake supper, volleyball tournament, record book session and 4-H On The Air. New business discussions included horse trailer rental, snack bar meeting, NWSF registration, new background check process, summer camp, Oz Run, Earth Day clean up. Next meeting will be a farm tour.

Sunny Valley by Kianna Turner

The April meeting discussion included the poultry swap, concession stand at the NWSF, fair book availability and entering fair projects. Discussed the club booth, play at the fair. Reminder that May is Community Service—each member must do some sort of community service, pictures should be taken. Club activity was a pizza and bowling party.

Chippewa County 4-H Clubs

Borderline Rebels
Drywood Dodgers
Edson Hilltop
Hallie
Haycreek Ramblers
Howard-Wheaton
Jim Town Jumpers
Kreative Kids
Mile Corner
Otter Creek Ramblers
Sigel Sod Busters
Sunny Valley
Sunnyside
Wissota Raptors
Woodmohr

Reminder:
Club secretaries
are asked to
e-mail or send
the club meeting
minutes to the
Extension Office
for inclusion in
the Chatter.

Natural Sciences/Resources

Shooting Sports

The shooting sports season has wrapped up and was celebrated with a banquet on Sunday, April 24th at the Bloomer Rod & Gun. Several youth participated in the season this year between archery, pistol, rifle and shotgun. Congratulations to all the youth that participated on your achievements for the season. A copy of the banquet program can be found in this newsletter.



4-H Summer Camp

4-H Overnight Summer Camp has been scheduled for Sunday, July 24 - Wednesday, July 27, at Kamp Kenwood. Day camp will be on Wednesday, July 27. As of May 1st, registration is now open to non-4-H members. The registration form can be found in this newsletter or on website.



Tractor Safety Program - LOCATION CHANGE

We had a location change for the 2016 program. This year's certification program will be held at the **Bloomer and Cadott High School**, not Stanley.

The Chippewa County Farm/Tractor and Machinery Safety Program will be held June 7-10, 2016 at both the Bloomer and Cadott High Schools. The purpose of the program is to teach youth about tractor, machinery and farm safety. Upon successful completion the student will receive certification in both the State and Federal Tractor and Machinery Programs. The safety program is directed toward youth who are 12-16 years of age. You will find the brochure and registration form within this newsletter and on our website.

Animal Science

4-H/FFA Quality Meat Animal Program

The next 4-H/FFA Quality Meat Animal Program meeting will be held on Monday, June 6, at 8:00 p.m. in Room 3 of the Courthouse. This meeting is required for all to attend in order to participate in the program.

There will be a special beef clinic expectations meeting on June 11, 2016 at Kragness Farms. Watch your email for additional information as it becomes available.

4-H Horse & Pony Program Meeting

The next meeting of the 4-H Horse & Pony Program will be held on Monday, May 16, at 6:45 p.m., at the Courthouse in Room 3.

Dog Obedience Training Sessions

Dog Obedience Training will begin Thursday, May 5th. Training times are broken down between beginner and experienced. Beginner dogs/children will be 6:15 p.m. - 7:00 p.m. with Experienced dogs/children beginning at 7:00 p.m. - 8:00 p.m. Fees for this training are \$20.00 per 4-H member or \$30.00 per 4-H family. Non 4-H members fee will be \$50.00. Information has been sent to all members in the dog project; however, if you are not in the project and would still like to attend the training you can find the handbook and registration form on the Chippewa County UW-Extension website under the 4-H Projects tab or you may contact Missy Klenke at missamayer@bloomer.net or call 715-404-5072. Registration and all required documents are due the first night of class for those wishing to participate.

State Fair Dairy Meeting

A meeting for those interested in exhibiting dairy cattle at the State Fair will be held on May 17th at 7:00 p.m., Courthouse, Room 3. Bring the following with you:

- Number of animals you plan to exhibit
- Breed of each animal
- Age of each animal



Area Animal Science Day

The Northwest District Area Animal Science Day is set for June 30th in St. Croix County. The entry form and more information is available in this newsletter.

Horse Stall Reservations

Horse stall reservations can be made by calling the UW Extension Office at 715-726-7950. All other stall/pen reservations will be made according to fair entries and will not require you to call to coordinate.

Livestock Learning Webinars

Archived recordings of the 2016 Livestock Learning Webinars can be found on the WI 4-H Youth Livestock page at: <http://fyi.uwex.edu/youthlivestock/programs/livestock-learning-webinar-series/>

Scroll on this page and you will find the ppt slides and audio files for the:

- February session focused on Beef and Swine
- March session focused on sheep/meat goats

These sessions were designed for older youth and are great tools for these members to further their leadership, sportsmanship and career exploration skills available to them beyond high school.

There are also archived recordings from the 2014 Livestock Learning Webinar series that are focused more on the beginning project member.

Any other questions on these Livestock Learning webinars, please contact Bernie O'Rourke, Extension Youth Livestock Specialist at borourke2@ansci.wisc.edu.

Opportunities/Upcoming Events

The Oz Run

Chippewa County 4-H has been selected as a beneficiary of the 2016 Oz Run! We will need volunteers to help at the event and are encouraging members to register to participate in the run/walk. More details to come in the April newsletter. For information visit the Oz Run website at <http://www.theozrun.com/home.html>

2016 Wisconsin Youth Conservation Camp Opportunities

Middle school youth (entering 6-8th grade in fall) are invited to attend **Sand Lake Conservation Camp** at Camp Bird near Crivitz (Marinette County) from June 22-24, 2016. The fee is \$100 (\$150 after May 18th) and includes room, board, t-shirt, and all activities/programs. Visit www.marinettecounty.com (search for "Sand Lake" or "Conservation Camp") for more information. Registrations not accepted after June 1st and are first-come, first-served; space is limited. Registration forms are available online. For more information or to have forms sent to you, please call Anne Bartels at 715-732-7784 or email abatels@marinettecounty.com.

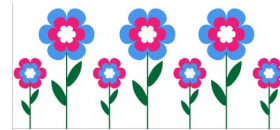
High school youth (entering 9-12th grade in fall; must be 17 or under) are invited to participate in the **Wisconsin Land + Water Conservation Association Youth Conservation Camp**, June 20-24 at the North Lakeland Discovery Center in Manitowish Waters (Vilas County, www.discoverycenter.net). Wildlife

programs, habitat restoration projects, daily field trips, teambuilding activities, and hands-on activities provide an in-depth look at natural resources management and careers. Registration fee is \$250 and covers all programs, meals, snacks, lodging, and a t-shirt. The deadline is June 3. Register online at: <http://wisconsinlandwater.org/events/youth-conservation-camps> or contact Kim Warkentin at the Wisconsin Land + Water Conservation Association at 608-441-2677 or email kim@wisconsinlandwater.org.

These camps provide fun outdoor experiences, help foster an appreciation for nature, and introduce a variety of opportunities in natural resources and conservation careers. Natural resource professionals present programs on wildlife, habitat, water quality, fisheries, forestry, outdoor skills, and more. Engaging speakers and interesting topics give campers an opportunity to participate in hands-on activities, learn outdoor skills, make friends, participate in typical 'summer camp' experiences, and enjoy Wisconsin's beautiful Northwoods.

2016 Wisconsin State Fair Youth Expo Participant

Youth participants are needing to lead the Activity Stations and interact with young fairgoers at the Wisconsin State Fair. The application along with the job description can be found in this newsletter.



Annual Northwest 4-H Golf Classic

Monday, June 13, 2016

11:00 a.m.

Kilkarney Hill Golf Club, River Falls, WI

This annual charity golf tournament creates resources to be used for scholarships, out-state learning trips, robotic programs and to reach out to non-4-Hers in Pierce, Polk, St. Croix, Chippewa and Dunn Counties. Thanks to your support, 4-H has proven results. According to recent Tufts University study, young people in 4-H:

- Report better grades, higher levels of academic competence and an elevated level of engagement at school
- Are nearly two times more likely to plan to go to college
- Are more likely to pursue courses or a career in science, engineering or computer technology
- Are shown to have had significantly lower drug, alcohol and cigarette use than their peers

Interested players may register as individual golfers for \$85.00 or a foursome for \$340.00. Registrations are due by May 30, 2016. For more information or to register, see the attached brochure or contact Sharon Seibel at 612-309-1794 or by email at Sharon@ismachine.com. Everyone is welcome to play!

4-H On-the-Air

2016



Chippewa County 4-H'ers have their very own radio program. The program, on WAXX Radio FM104 each Saturday morning at 6:10 a.m. is taped during the week prior to the show. Bob Bosold, Farm Director at WAXX, interviews members or leaders of your club about activities and projects in which your club is involved. Contact the Extension Office to reserve your time.

May 21	Otter Creek Ramblers	November 19	OPEN
June 18	OPEN	December 17	OPEN
July 16	Woodmohr	December 31	OPEN
July 30	Edson Hilltop		
August 20	OPEN		
September 17	OPEN		
October 15	OPEN		



Volunteer of the Year, Friend of 4-H Award and Community Servant Award Nominations

We have several great volunteers and friends helping the Chippewa County 4-H Youth Program. Help us know who they are by nominating them for one of these county awards! Applications are still being accepted for the Volunteer of the Year, Friend of 4-H and Community Servant Awards. A new award this year for Chippewa County is the Friend of 4-H Award which will recognize individuals, groups or businesses who have provided ongoing and significant service to or support of the 4-H program. Also new this year is the Community Servant Award which recognizes a 4-H member or 4-H group who demonstrates exemplary service to their community. Do you know or have someone in mind? The applications are included in this newsletter. We have extended the deadline and nominations are due to the Extension Office by Tuesday, May 10, 2016. All nominations will be reviewed and the selected candidate(s) will be presented their award at the 4-H Graduation/Award ceremony at the fair.

Let's show everyone how much fun 4-H can be!

We are looking for photos to use in creating a slideshow for our website and at the fair. The show will highlight all the fun and helpful things 4-H Clubs do throughout the year.

We are asking that you submit your photos as JPEGs or hard copy (with short descriptions). If hard copy provided we will scan and put in your club drawer. These will need to be submitted no later than **May 27, 2016** to allow time to create the slide show before the fair.

This will be a great memory piece and a great way to highlight 4-H. Please email your photos to heather.lubs@ces.uwex.edu or you can bring your photos in to the Extension Office on a flash drive or hard copy and they will be returned to you.



The Oz Run

You may have heard by now that the Chippewa County 4-H has been chosen to be a beneficiary of the 2016 Oz Run which will be held on Saturday, May 28th at the Northern Wisconsin Fair Grounds. The Oz Run is a 5K Run/Walk and Half Marathon local "run" raising event benefiting local organizations.



We are excited about this opportunity to highlight 4-H to our community and participants of the event. With this wonderful opportunity comes a call for volunteers to help with the event. As a beneficiary we are asked to provide over 80 volunteers for the event. We need your help! Below highlights some of the areas that we need volunteers for. Please consider signing up as an individual or as a club.

Volunteers needed for the following:

**Raffle tickets are now
available for purchase in
the Extension Office.
Tickets are \$5.00 each or
5 tickets for \$20.00.**

Sell Raffle Tickets
Direct Runners on Route
National Anthem Singer
Pacers (8 min miles pace)
Cheer Stations
Water Station Support
Runner Re-Fuel Table
Food Servers
Ticket Sales
Face Painting
Hand out Medals
Runner Packet Pick up (Friday night, May 27th)

Volunteers will receive a volunteers t-shirt, refreshments, community service hours, the good feeling that comes with helping a worthy cause, and gratitude from the Oz Run team and all of the 4-H Members.

There is not an age restriction on volunteers except where noted.

This is sure to be a fun-filled event including a petting zoo, yard games, live band, costume contest for runners, Memorial Day service and much more!

Volunteers will be asked to report to Volunteer Check-in at the Fairground at 7:00 a.m. and are asked to be available until noon. If you cannot be available the entire time please note this on your registration to volunteer to ensure ample coverage of each area. Volunteers can register by email at volunteer@theoosrun.com

Gates to the event will open at 6:00 a.m. and provide a bag check with will be run by The Oz Run coordinators. The first run (Half Marathon) will begin at 8:00 a.m. and the second run (5K) will begin at 8:30 a.m. Both runs should be finished by 11:30 a.m.

Raffle tickets are available for purchase in the Extension Office. The grand prize will be a pair of 4-Day VIP Tickets and General Camping for Country Fest. Tickets will sell for \$5.00 each or 5 tickets for \$20.00.

We are looing forward to this wonderful event and hope to see you all there!!



Cloverbud Corner



Spring Treasure Hunt!

Materials:

- Pencil or pen
- The List below
- A place to be outdoors
- Your senses!



What to do:

Head outdoors on a spring treasure hunt and look for the items on the list. When you find something, check the box and describe next to it what you found. Leave the items where you find them!

- A bird that is signing _____
- Something green _____
- Something that is rough to touch _____
- Something that is smooth to touch _____
- A hole or nest where a critter might live _____
- An insect _____
- A flower _____
- Something that is oval in shape _____
- Something yellow _____
- Something rectangular _____
- Something blue _____
- A feather _____
- Scat (droppings left behind from an animal such as deer, raccoon, bird...) _____
- Tracks from an animal _____
- Something brown _____
- A nut or seed _____
- A vine _____
- A spider _____
- A worm _____
- A butterfly _____
- Something orange _____
- Something with lines on it _____
- Something with spots on it _____
- Something white _____
- Something hairy _____
- Something that hops _____
- A food source for deer, raccoon, or any other animal _____
- Something we may use to decorate our home _____
- Something people need to use in our everyday lives _____
- Something not on this list! _____

Were you a good detective? Did you use your senses of sight, smell, hearing, and touch? All around you are different colors, textures, sounds and patterns in nature.

May 2016

Chippewa County University Extension
Courthouse, Room 13, 711 North Bridge Street
Chippewa Falls, WI 54729
(715-726-7950) FAX (715-726-7958)

Please note that access to the Courthouse after 5 p.m. is limited to the north Cedar Street entrance door #4 and the east High Street entrance door #3. Please use these entrances after 5:30 p.m. Parking is available in the High Street and North parking lots, as well as the Spruce St. parking lot.

Jerry Clark
Crops and Soils Educator
 jerome.clark@ces.uwex.edu

Mary Geissler
Family Living Agent
 mary.geissler@ces.uwex.edu

Jackie Johnson
4-H Youth Development Agent
 jackie.johnson@ces.uwex.edu

Joseph Malual
Community, Natural Resource & Economic Development Agent
 joseph.malual@ces.uwex.edu

Nancy Fastner
Wisconsin Nutrition Education Program
 nancy.fastner@ces.uwex.edu

Heather Lubs
Administrative Assistant III
 heather.lubs@ces.uwex.edu

Chippewa County
4-H Mission Statement

"Promoting fun and educational opportunities to all youth and their families of Chippewa County through 4-H programs."

Chippewa County UW Extension Website:
<http://chippewa.uwex.edu>

Chippewa County 4-H Website:
<http://chippewa.uwex.edu/4-h-youth-development/>



Thank you to...

- ⇒ **Jill Kuehni and Jaimie Keeku for coordinating the Volleyball Tournament.**
- ⇒ **Kim Syverson, Food Revue Superintendent**
- ⇒ **Emily Lehmann, Clothing Revue Superintendent**

4-H PLEDGE

I pledge my **HEAD** to clearer thinking,
 my **HEART** to greater loyalty,
 my **HANDS** to larger service,
 and my **HEALTH** to better living,
 for my club, my community,
 my country, and my world.



2016 CHIPPEWA COUNTY 4-H DAIRY POSTER CONTEST



All 4-H members in Chippewa County are eligible to enter this county 4-H Dairy Promotion Poster Contest. This contest is open to ALL 4-H MEMBERS, not just dairy 4-H members!

Rules for the contest are:

1. Posters must be 14" x 22" in size.
2. Poster contest participants are encouraged to develop their own artwork and dairy slogans. Awards will be based on originality and creativity.
3. Posters may be either horizontal or vertical.
4. Posters must have the following member information on the back of each entry: (PRINT)
 - A. Member name
 - B. County
 - C. Member age and division
 - D. 4-H club name
5. Poster divisions are: (as of January 1, 2016)
 - *Cloverbuds (grades 1-2) (county contest division only)*
 - *Junior Division (grades 3-6)
 - *Intermediate Division (grades 7-9)
 - *Senior Division (grades 10-13)
6. Chippewa County prizes will be offered to the top two posters in each division.
7. ALL ENTRIES are due at the Extension office by Friday, June 17.

The Dairy Poster Contest scorecard is as follows:

1. ORIGINALTY: clever dairy slogan and artwork40 points
 2. EFFECTIVENESS: conveys strong dairy promotion message40 points
 3. GENERAL APPEARANCE:
 - A. Well planned; good design 10 points
 - B. Neat and well constructed 10 points
- TOTAL 100 points

*District Contest: The top two posters in each division (except Cloverbuds, which is a county contest division only) will go on to the District Competition, June 30, in St. Croix County.

For more details or information, contact Jackie Johnson, Chippewa County 4-H Youth Development Agent at 715-726-7956 or by email at jackie.johnson@ces.uwex.edu

2016 Chippewa County

4-H T-Shirt/Hooded Sweatshirt Order Form

The 2016 4-H T-Shirt and Hooded Sweatshirt choices are Irish Green with white print, smoke grey with black print and black with green print. The shirts will have the outline of Wisconsin with the 4-H clover and the slogan "4-H Grows Here".

T-shirts will cost \$10.00 for youth and adult sizes to XL. Sizes over XL are \$1.00 per size up. Sweatshirts will cost \$20.00 for youth and adult sizes to XL. Sizes over XL are \$2.50 per size up.

To guarantee the prices noted above we will need to have a minimum order of 50 t-shirts/sweatshirts combined. All orders are due to the Extension Office no later than May 27, 2016. What you order is what you will get; therefore, please measure for correct size, double check your orders and account for shrinkage. **NO** orders will be placed until payment is received with official order form.

Gilden® Ultra Cotton® 100% T-Shirt. 2000

Product measurements.

Chest: measured across the chest one inch below armhole when laid flat.

Sleeve Length: Start at center of neck and measure down shoulder, down sleeve hem.

Body Length at Back: Measured from high point of shoulder from the back.

Adult	Small	Medium	Large	XL	2XL	3XL	4XL	5XL
Chest	18	20	22	24	26	28	30	32
Sleeve Length	16 1/2	18	19 1/2	21	22 1/2	24	25 1/4	26 1/2
Body Length at Back	28	29	30	31	32	33	34	35

Gilden® Heavy Blend™ Hooded Sweatshirt. 18500

Product measurements.

Chest: measured across the chest one inch below armhole when laid flat.

Sleeve Length: Start at center of neck and measure down shoulder, down sleeve hem.

Body Length at Back: Measured from high point of shoulder from the back.

Adult	Small	Medium	Large	XL	2XL	3XL	4XL	5XL
Chest	20	22	24	26	28	30	32	34
Sleeve Length	33	34	35	36	37	38	39	40
Body Length at Back	27	28	29	30	31	32	33	34

Gilden® Youth Ultra Cotton® 100% T-Shirt. 2000B

Product measurements.

Chest: Measured across the chest one inch below armhole when laid flat.

Sleeve Length: Start at center of neck and measure down shoulder, down sleeve hem.

Body Length at Back: Measured from high point of shoulder from the back.

Youth	XS	S	M	L	XL
Chest	16	17	18	19	20
Sleeve	13 1/2	14 1/2	15 1/2	16 1/2	17 1/2
Body Length at Back	20 1/2	22	23 1/2	25	26 1/2

Gilden® Youth Heavy Blend™ Hooded Sweatshirt. 18500B

Product measurements.

Chest: measured across the chest one inch below armhole when laid flat.

Sleeve Length: Measure from center back neck to finished sleeve hem.

Body Length at Back: Measured from high point of shoulder from the back.

Youth	XS	S	M	L	XL
Size	6-8	10-12	14-16	18-20	22-24
Chest	16	17	17	18	18
Sleeve Length from Center Back	23 1/2	26 1/2	27 3/4	30 1/4	33
Body Length at Back	19 3/4	21 1/4	22 1/2	24	25 1/2

2016 Chippewa County 4-H T-Shirt/Sweatshirt Order Form

NAME: _____

TELEPHONE: _____

FULL ADDRESS: _____ CLUB: _____

Make Checks Payable to: Chippewa County 4-H Leaders Council

NAME	T-SHIRT SIZE \$10.00/ EACH	ADD'L SIZE T-SHIRT FEE \$1.00 - 2XL \$2.00 - 3XL \$3.00 - 4XL \$4.00 - 5XL	T-SHIRT COLOR KELLY GREEN or SMOKE GREY or BLACK	HOODED SWEAT- SHIRT SIZE \$20.00/ EACH	SWEATSHIRT COLOR KELLY GREEN or SMOKE GREY or BLACK	ADD'L SIZE SWEATSHIRT FEE \$2.50 - 2XL \$5.00 - 3XL \$7.50 - 4XL \$10.00 - 5XL	AMOUNT
See reverse for sizing options.						TOTAL DUE:	

Make Checks payable to: Chippewa County 4-H Leaders Council.

Order forms may be mailed or dropped off at the Chippewa County Extension Office located at 711 N. Bridge Street, Room 13, Chippewa Falls, WI 54729

Thank you for ordering t-shirts/sweatshirts to show your proud support of 4-H Youth in Chippewa County.

Chippewa County 4-H Presents:

Engineering Challenge Rematch

There will be a rematch for the engineering challenge at the Northern WI State Fair on July 12 during the judging at the Youth Building! This event will run from 9:00am to 1:00pm. This rematch will give everyone a chance to take what they learned, build upon it, and see how it works!

The Challenge will again be the bridge building and tractor pull. I have done some modifying to the tractor pull track so I'm confident that it will work much better!

Those who purchased kits for the March Challenge, but did not get to compete are free to use the kits they already have. If you do not have kits, but would like to design, build, and test a bridge and/or tractor, visit the UW Extension Office to pick up a kit! Those that did the March Challenge will need to get another bundle of wood, but are free to reuse their tractor traps.

Kits:

Bridge and trap:	\$10.00
Bridge:	\$6.00



The same rules will apply:

Bridge:

You will get 2 bundles of balsa wood, no other wood can be substituted, are free to use a glue of your choice, no other fasteners will be allowed. The bridge needs to be greater than 15.5" and less than 16" long, be 2-4" wide, and no taller than 6". A 2x3" plate will be placed on the bridge with weight added until the bridge collapses.

Tractor:

You are given 1 rat trap to power your tractor; no other forms of stored energy (springs, weights, and etc.) can be used. You may add a lever to the spring arm, or use gearing to increase distance or power, but the trap must be the only source of energy. The design is completely up to you, the engineer, and it can be front wheel drive, rear wheel drive, four wheel drive, or even one wheel drive! Your tractor can be built out of any material, and be any size, but you will need a 3/8" hole for a hitch.

For more information please contact Scott Hansen, 715-568-4260 or pizzacutter4x4@hotmail.com

Chippewa County 4-H Camp
July 24-27, 2016
Kamp Kenwood, Chippewa Falls



Overnight Camp: Youth completing grades 3-8. Camp will start late Sunday afternoon, July 24 and close Wednesday evening, July 27. Camp is limited to 70 campers and will be filled on a first come, first served basis.

Day Camp: Youth completing grades 1-3. Camp will begin at 7:30 a.m. Wednesday, July 27, and will close beginning at 4:00 p.m. with a parents program.

4-H camp offers an excellent opportunity for youth to make new friends, learn new camping skills, and enjoy the outdoors. A letter and camp health form will be sent in June with information on items needed for camp and other details. Again this year, the Chippewa County 4-H Forest Scholarship Committee is awarding each overnight 4-H camper a \$40 scholarship to offset their registration fee. 4-H camp registration opens to everyone on May 1.

There is a special opportunity for 7th & 8th graders to participate in an overnight canoe trip.

Parents and family are invited to attend the camp program at 4:00 p.m. on Wednesday, July 27. Campers will depart following the program. No refund for cancellation after June 1.

One form per camper

Camper's Name: _____ Male _____ Female _____

Full Address _____ Telephone _____

Parent's Name _____ 4-H Club _____

Grade as of 1/1/16 _____ My child needs an accommodation to participate in camp: Yes _____ No _____

Photo release _____yes _____no T-Shirt Size (overnight campers only): (circle one) Youth: S M L XL
Adult: S M L XL

Registration fee: (campers per family):

Overnight Camp:

4-H members: _____ \$50.00

Non 4-H members: _____ \$100.00

Day Camp:

4-H members: _____ \$25.00

Non 4-H members:: _____ \$30.00

Total enclosed: \$ _____ Check # _____ Cash _____

Make check payable to: **Chippewa County 4-H Leaders, Inc.**
(NO REFUND FOR CANCELLATION AFTER JUNE 1)

Return to: Jackie Johnson, 4-H Youth Development Agent
Courthouse, Room 13, 711 North Bridge Street, Chippewa Falls, WI 54729

Junior Olympics

8-11 Age Group

Andrew Plendl—Gold
Matt Elmhurst—Silver

12-14 Age Group

Emily Elmhurst—Bronze

Championship Team—1759 Pts

Andrew Plendl
Emily Elmhurst
Christian Wurzer
Dominic Hall

40 Shot Standing

Dominic Hall—2nd
Christian Wurzer—3rd

Special Thanks...

Supporters

Back 40 Restaurant	Kwik Trip
Blain's Farm & Fleet	Mornings' Meats
Bloomer Hardware	Mouldy's Archery & Tackle
Bloomer Lions Sportsman's Club	Northwest Pathways to Independence
Bloomer Rod & Gun Club	Quality Fuels
Bob's Processing	River Country Co-op
Boyd Trustworthy Hardware	Scheels
Charter NEX	Shadicks Grocery & Hardware Store
Chippewa Valley Forklifts	Stanley Tire Center
Chippewa Valley Whitetails Unlimited	Subway
Chippewa Valley Hardware & Sporting Goods	Texas Roadhouse
Culver's of Lake Hallie	Tim & Liz Blum
Dale Siverling—CO2 for air rifles	Todd's Pro Shop
Frazier Excavating	Tractor Central
Horizon's LLC	Walmart

Wisconsin National Guard Armory-Chippewa Falls

Shooting Sports Committee & Volunteer Recognition

Steve Siverling, Chairman	Jerome Bauer	Bob Lane
Kim Siverling & Cathy Irwin, Treasurers	Rod Elmhurst	Gordon & Linda
Joe Tiry, Co-Rifle Chair	Scott Gascoigne	Peterson
Matt Frisinger, Co-Rifle Chair	Rebecca Hager	Ron Sigurdson
Henry LeBakken, Archery Chair	Nikki Hall	Michelle & Matt
Chad & Heather Phillipps, Pistol Chair	Stephanie Homann	Wurzer

We thank all of the parents for supporting and helping their child as a
4-H Shooting Sports Project Member!

Future Shooting Competitions are held throughout the summer and are listed on the
state website at <http://fyi.uwex.edu/wi4hshootingsports/competitive-shoots/>

CHIPPEWA COUNTY 4-H SHOOTING SPORTS RIFLE AND PISTOL AWARDS

APRIL 24, 2016

Aim High!

In Shooting...

In 4-H...

In Life...

Shoot For The Stars...



EVEN IF YOU ONLY MAKE IT TO THE MOON,
YOU STILL HAVE GONE WAY FURTHER
THAN THOSE WHO HAVEN'T TRIED AT ALL!

PROGRAM

Welcome	Joe Tiry
Flag Pledge	Karlee Sigurdson
4-H Pledge	Soren Sigurdson
Basic Rifle Graduates	Joe Tiry
Qualification Rifle & BB Gun	Matt Frisinger Vince Hall Gordon Peterson
Distinguished Expert	Joe Tiry
NRA Sectional Report	Rod Elmhurst
Junior Olympics Report	Steve Siverling
Challenge Program	Matt Frisinger
3 Year Pennants Ben Ream Max Schofield	Gordon Peterson
Volunteer Recognition	Joe Tiry Gordon Peterson Steve Siverling
Raffle	Steve Siverling Cathy Irwin Gordon Peterson Kim Siverling

Basic Rifle Graduates

Deven Asselin	Joel Krueger	Zach Pieper
Willy Bischel	Brock Krumenauer	Kianna Prince
Griffin Dachel	Logan Lubs	Mitchell Romundstad
Michael Hager	Evan Lueck	Will Shoebridge
Asger Kierkagaard	Carson Oemig	Kennedy Swan
Storm Tiry	Jace Zwiefelhofer	

Distinguished Expert Award

Soren Sigurdson	Christian Wurzer
-----------------	------------------

NRA Sectional

Championship Team—1718 Pts

Christian Wurzer
Emily Elmhurst
Dominic Hall
Andrew Plendl

Third Place Team—1346 Pts

Cristian Kuchlenz
Matt Elmhurst
Christian Hall
Rachel Hager

Individual Awards

Sub Jr.	Intermediate Jr.
Emily Elmhurst—1st	Christian Wurzer—2nd
Dominic Hall—2nd	
Cristian Kuchlenz—4th	Junior
Matt Elmhurst—5th	Asger Kierkagaard—2nd
Andrew Plendl—6th	

B B Gun Overall

Zach Pieper—Silver Medallion
Evan Lueck—3rd
Deven Asselin—5th

B B—3 Age Group

Brock Krumenauer—2nd

B B—2 Age Group

Evan Lueck—3rd
Deven Asselin—5th

B B Team 2nd—1495 Pts

Zach Pieper
Evan Lueck
Mitchell Romundstad
Brock Krumenauer
Blake Sikora



Bloomer/New Auburn Vo-Ag
Darren Swartz (715-568-5300)
DeWayne Fossum (715-568-5300)
Brenda Scheil (715-237-2505)

Chippewa Falls Vo-Ag
Jeanna James (715-726-2406) ext. 1229

Cornell Vo-Ag
Leigh Dobberstein (715-861-6947)
Rick Erickson (715-861-6947)

Stanley-Boyd/Cadott Vo-Ag
Jordan Donnerbauer (715-644-5534)
Keith Becker (715-289-3795)

UW-Extension
Jerry Clark, Crops & Soils Educator
Jackie Johnson,
4-H Youth Development Agent

The University of Wisconsin-Extension provides affirmative action and equal opportunity in education, programming and employment for all qualified persons regardless of race, color, gender, creed, disability, religion, national origin, ancestry, age, sexual orientation, pregnancy, marital or parental status, or veteran status.

If you need an interpreter, materials in alternate formats or other accommodations to access these programs, activities or services, please contact the program coordinator at (715) 726-7950 or call 711 for Relay as soon as possible preceding the scheduled events so that proper arrangements can be made in a timely fashion.

Courthouse, Room 13
711 N. Bridge St.
Chippewa Falls WI 54729
(715-726-7950)

**2016
CHIPPEWA COUNTY
FARM/TRACTOR
AND
MACHINERY SAFETY
CERTIFICATION**



**SPONSORED BY:
CHIPPEWA COUNTY
UW-EXTENSION AND
CHIPPEWA COUNTY
VOCATIONAL
AGRICULTURE**

June 7-10, 2016
8 a.m. to 2 p.m.
Bloomer and Cadott

The purpose of this program is to teach youth about tractor, machinery, and farm safety.

Tractor and farm machinery operators need to be knowledgeable and safety-smart. Studies show that many farm accidents are caused by inexperience, carelessness, haste, fatigue, stress, or poor judgment or attitude. These problems, and practical tractor operation, will be discussed by program instructors.

With certification, youth ages 12 to 16 will be allowed to operate tractors or self-propelled implements of husbandry on a public road, under the direction of their parent or guardian (state law).

Youth ages 14-15 will be certified to be employed or to work without pay on a farm other than their family farm (federal law). They will be certified in:

- 1) **TRACTOR OPERATION** - Operating a tractor over 20 PTO horsepower. This includes connecting or disconnecting equipment or any equipment parts to or from a tractor.
- 2) **EQUIPMENT OPERATION** - Operating or assisting to operate equipment listed below. This includes starting, stopping, adjusting, feeding, or any activity including physical contact associated with the operation of the equipment listed. This equipment includes: hay mower, hay baler, forage harvester, forage blower, unloading mechanism of a non-gravity-type self unloading wagon or trailer, grain combine, corn picker, auger conveyor, feed grinder, crop dryer, cotton picker, post-hole digger, post driver, non-walking-type rotary tiller, and mobile pea viner.

Upon successful completion of this 24-hour program, the student will receive certification in both the State and Federal Tractor and Machinery Programs (see back panel for details). This safety program is directed toward youth who are 12-16 years of age. To enroll, youth must be at least 12 years of age the day that the class begins.

The **state certification** is good for four years. The **federal certification** will automatically be issued when youth reach their 14th birthday.

In order for a youth to successfully complete the program and receive the Wisconsin Safe Operation of Tractor and Machinery Certificate of Training, he or she must:

- Attend 24 hours of instructional training;
- Pass written exam with a score of 70% or greater; and
- Pass a driving exam, which demonstrates tractor driving ability in a 2-wheel course with a trailed implement.

Students will also be asked to complete a 15-question identification quiz.

Students must bring lunch and a beverage to each class for noon lunches, and a writing utensil.

To register for the program, complete the form and return it to: UW-Extension, Courthouse, Room 13, 711 N. Bridge St, Chippewa Falls, WI 54729, by Friday, May 20.

A \$30.00 fee is charged for education materials and registration. Participants are asked to bring a sack lunch. Checks should be made payable to: UNIVERSITY EXTENSION.



Farm/Tractor Safety Certification Student Registration

Name _____

Parent (Guardian Name) _____

Address _____
(Street/City/Zip)

Telephone _____ Grade _____

School _____

Birthdate ____/____/____ Age _____

Check: ____ Male ____ Female

Race: ____ White ____ Black ____ Asian
____ Am Indian ____ Hispanic

Residence: ____ Farm ____ Rural Non-Farm
____ City 10,000-50,000

Check: ____ I belong to _____ 4-H Club
____ No, I'm not a 4-H member
____ Yes, I'd like to learn more about 4-H

Check Site Attending:

____ June 7-10, 2016, Bloomer High School

____ June 7-10, 2016, Cadott High School

⇒ As a student, I agree to take part in this special 4-H/FFA program, and I agree to obey instructors and conduct myself safely while in this program.

Student Signature/Date

⇒ As a parent (guardian) of the above child, I give my consent for his/her participation in this program.

Parent (Guardian) Signature/Date

Fee: \$30.00 per student

Make check payable to: University Extension

Amount enclosed: \$ _____

Return to: UW-Extension

Courthouse, Room 13

711 N Bridge St

Chippewa Falls WI 54729

Deadline: May 20, 2016

Ch#/Cash \$ _____
Date _____
Rec'd by: _____

Registration Form Spring 2016

Chippewa County 4-H Dog Obedience and Showmanship Training

Youth Information (please print)

Name _____ School _____ Grade _____

Age of youth _____ Birth date _____ Female/ Male (circle one)

Parent/Guardian(s)

Name _____ Phone _____
(Home/Cell/Work)

Address _____
Street City State Zip

Email _____

What is the BEST way to contact you if there are any cancellations or emergencies? _____

4-H Membership

____ Yes, I belong to the _____ 4-H Club

____ No, I do not belong to a 4-H club.

Training Experience

ME

____ I am new to obedience class

____ I have been to obedience class

____ I am new to showmanship class

____ I have been to showmanship class

MY DOG

____ My dog is new to obedience class

____ My dog has been to obedience class

____ My dog is new to showmanship class

____ My dog has been to showmanship class

In addition to obedience, I am interested in showmanship class Yes/ No (circle one).

Dog Information

Name of dog _____ Breed _____ Age _____ Sex _____

Is your dog spayed/ neutered YES/ NO (circle one)

Dog Health Records (record date of most recent shot).

Rabies _____ Distemper _____ Parvo _____

Fee Information

Paid Cash _____ Check _____ Date _____ Instructor Initials _____

(Make checks payable to Chippewa County 4-H Leaders)

2016 4-H Volunteer of the Year Award Nomination

Name to be nominated _____

Club _____

Address _____

I would like to nominate the above person as 4-H Volunteer of the Year for the following reasons:

Submitted by: _____

Date: _____

Return to: Jackie Johnson
4-H Youth Development Agent
Courthouse, Room 13
711 N Bridge Street
Chippewa Falls, WI 54729

Return by: ~~April 30, 2016~~ — Extended to May 10, 2016

Community Servant Award

The Community Servant Award recognizes a 4-H member or 4-H group who demonstrates exemplary service to their community.

Name of Nominee: _____

Date: _____

- Please write in 2-3 sentences how they have made a positive impact on the community.

- How does the nominee continue to show growth between the community and 4-H?

- The Community Servant award winner will receive a cash award. Explain how you would use the cash rewards to continue community projects?

The Chippewa County 4-H Leader's council asks each award recipient to submit a photo and brief (200 word or less) description of their project and its impact on their community. Article and photo can be emailed to Jackie Johnson at jackie.johnson@ces.uwex.edu This information will be forwarded to the Wisconsin 4-H Foundation.

Friends of 4-H Award

The Friends of 4-H is awarded to individuals, groups, businesses who have provided ongoing and significant service to or support of the 4-H program.

Name of Nominee: _____

Date: _____

- Please write in 2-3 sentences how they have made a positive impact on the community.

- How does the nominee show the essential strengths for the 4-H organization and its members?

- How does the nominee's ongoing commitment to young people through project support and/or activities promote decision-making, problem-solving, meeting challenges, mastery and youth/adult partnerships (Positive Youth Development opportunities)? List how the nominee exemplifies at least 3 of these areas.

- How does the nominee exemplify a “mentor-learner” relationship with 4-Hers?

The Chippewa County 4-H Leader’s Council President will present the Friend of 4-H award winner with a plaque at a ceremony at the Northern Wisconsin State Fair in Chippewa Falls, Wisconsin.

Bylaws and Policies of the Chippewa County 4-H Leaders, Inc.
Chippewa Falls, Wisconsin

*(Adopted 11/13/06, Revised 11/27/07, Revised 3/11/08, Adopted 6/10/08, Revised 1/12/10, Adopted 6/8/10, Revised 3/13/12,
Adopted 5/8/12, Revised 5/14/13, Adopted 6/11/13, Adopted 5/12/15, **DRAFT REVISION 3/9/16**)
Run in May 2016 newsletter – changes will be in effect as of 9/1/16)*

Formatted: Font color: Red

Formatted: Font color: Red

Resolve, that the Chippewa County 4-H Leaders, Inc. (Council) hereby adopts the following restated membership and policies guidelines, which shall supersede the present membership and policies guidelines and all amendments thereto.

Chippewa County's membership information and policies guidelines will follow the established policies of the WISCONSIN 4-H YOUTH DEVELOPMENT POLICIES

<http://4h.uwex.edu/resources/policies/documents/WI4HYouthDevelPolicies.pdf>

Additional requirements and clarifications above the State requirements are as follows.

Article I – Name

The name of this organization shall be the Chippewa County 4-H Leaders, Inc.

Article II – Purpose

Section 1. The purposes of this organization are as follows:

- A. Study the needs of youth in Chippewa County and implement educational programs to meet those needs;
- B. Raise and expend money for a variety of 4-H events and activities;
- C. Determine policy for, and conduct of, the 4-H program in Chippewa County;
- D. Serve as a vehicle for leadership development; and
- E. Conduct business of the organization

Section 2. The above named purposes shall be executed in cooperation with Cooperative Extension personnel and the Agricultural and Extension Education Committee of the Chippewa County Board of Supervisors. Chippewa County 4-H Leaders, Inc. follows the Wisconsin 4-H Policies and in compliance with national name and emblem regulations.

Article III – Leaders Council Membership and Related Information

Section 1. The Chippewa County 4-H Membership year will be defined as September 1 through August 31 of the following year.

Section 2. The membership of this corporation shall consist of all 4-H organizational, project, activity, resource or special adult leaders who have been certified in accordance with current Chippewa County 4-H and Wisconsin 4-H requirements.

Section 3. This corporation complies with the Civil Rights Act of 1964, Title IX of the Education Amendments of 1972 and the American's with Disabilities Act and shall not discriminate on the basis of age, race, color, creed or religion, national origin, ancestry, sex, sexual orientation, marital or parental status, pregnancy, veterans' status, arrest or non-program related conviction record, or qualified disability, who provide leadership in 4-H programs in Chippewa County.

Section 4. Leaders Council will work in conjunction with county-wide committees to carry out the 4-H educational programs.

Section 5. The Leaders Council will serve as the governing body. Membership shall be a minimum of one adult representative from each Chippewa County 4-H Club known as the Leaders Council. Each club will be allowed one vote.

Article IV – Youth Member Requirements relating to Projects, Activities, and Club Work

The Chippewa County 4-H Leaders Council has established general requirements to Chippewa County 4-H Youth who want to achieve and receive recognition as county 4-H members. (Local 4-H clubs will follow these achievement requirements, administering them, and reporting the results to the Extension Office.)

Section 1. The Chippewa County 4-H Membership year will be defined as September 1 through August 31 of the following year.

Section 2. This program complies with the Civil Rights Act of 1964, Title IX of the Education Amendments of 1972 and the American's with Disabilities Act and shall not discriminate on the basis of age, race, color, creed or religion, national origin, ancestry, sex, sexual orientation, marital or parental status, pregnancy, veterans' status, arrest or non-program related conviction record, or qualified disability, who provide leadership in 4-H programs in Chippewa County.

Section 3. 4-H will use the member's grade in school for other grouping purposes. Grades will be figured at the fall enrollment.

Section 4. General membership enrollment deadlines are as follows:

- A. Members from the previous year are encouraged to enroll by November 1
- B. New members may join at any time during the year, but may not be able to exhibit at the Northern Wisconsin State Fair, as per fair rules.

Section 5. The number of projects a member may enroll in are as follows:

A. ~~5K through First and~~ Second graders will be enrolled in the 4-H Cloverbud project.

~~B. Third graders, or youth completing two years in the cloverbud project, may enroll in the Exploring project and/or they may select a project. Explorers may exhibit one animal at the Northern Wisconsin State Fair.~~

C. A member enrolling in more than six (6) projects requires the consent of the parent(s), project leader, and the 4-H club advisor.

Section 6. Requirements for yearly member successful completion are as follows:

Membership Requirements for Achievement Recognition

- A. Attend monthly club meetings regularly and participate in club activities (4-H Club may designate a percent rule)
- B. Give demonstration or talk
- C. Exhibit a project at club meeting, club tour, public exhibit, community or county fair
- D. Complete and turn in a 4-H Record Book to club representative by August 31 or by the date specified and approved by the club Parent Advisory Committee.

Members not completing items A - D above are not eligible for project achievement recognition.

Section 7. 4-H Project Requirements for Achievement Recognition for Each Enrolled Project

- A. No project additions after March 1 for existing members
- B. No project drops after March 1 for existing members
- C. Attend project meetings regularly and participate in project activities – Club project leaders may designate a percent for this item
- D. Give a talk or demonstration (must be related to the project) at project, club, or special meetings – at county, district, or State Fair, or any special 4-H event
- E. Exhibit a project at a local community, county, or district fair, or a similar event, where the project is judged or critiqued and is viewed by the public (project can not be judged on club level)
- F. Complete all project records and turn in a completed 4-H Record Book to club representative by August 31, or by date specified, date set by parent advisory committee for the club.

Formatted: Font color: Red

Formatted: Font color: Red, Strikethrough

Formatted: Font color: Red

Formatted: Font color: Red, Strikethrough

(The death of a project animal during the 4-H year should not count against the achievement record of a 4-H member. Any other hardship case regarding membership achievement or project achievement should be reported to the club advisor for successful completion consideration)

Section 8. Members who do not meet achievement requirements

- A. May re-enroll the following year. Members will not be eligible for county sponsored trips or the Key Award that year in which record books are required.

Section 9. 4-H CLUB REQUIREMENTS AND RESPONSIBILITIES

- A. All clubs need to annually review Chippewa County 4-H Policies and Bylaws. Copies of bylaws and policies should be signed and turned into the County Extension office
- B. Number of club meetings and project meetings
 - 1. 4-H clubs are encouraged to have a monthly meeting/gathering, and each club is required to have a minimum of six monthly meetings/gatherings annually
 - 2. Each 4-H club is expected to have regular project meetings in order to attain club and individual member goals for the year
- C. It is the responsibility of the club to locate project and activity leaders. **ALL LEADERS MUST COMPLETE THE YOUTH PROTECTION PROCESS.** When one or two youth are enrolled in a specified project with no leader identified the parent(s) or approved youth leaders can serve as leader for the project.
- D. A committee of leaders in a club shall make final determination of awards for successful completion earned by the members of the club. The record of the individual member, leader, and club completion is then brought to the County Extension Office for recording and packaging by each 4-H club on September 15 or as requested.
- E. Selection of club award winners is done by leaders and parents in the local 4-H club. To be eligible for club awards, members must meet club and county requirements.

Section 10. Financial policies for 4-H Clubs and members

- A. All checks issued by the Leaders Council checking account need to be cashed within 60 days of issuance.
- B. All bills must be submitted by end of fiscal year (August 31) to the Extension Office.
- C. Annual Financial Report must be submitted by November 1 to the Extension Office.

Article V – Executive Board

Section 1. Qualifications. Only members who have served as certified adult leaders one or more years may be elected to the Executive Board.

Section 2. Nominations. A nominating committee shall be made up of all Executive Board members. Additional nominations may be accepted from the floor at the September 4-H Leader's Meeting.

Section 3. Elections. Officers will be elected from the list of representatives from the clubs at the September 4-H Leaders meeting of the Chippewa County 4-H Leaders, Inc.

- A. The president-elect shall serve one year as such, then move to the office of president, with a new president-elect elected each year.
- B. Following the term of president, he or she will serve one year as past president.
- C. The secretary will be elected in the odd-numbered years for a two-year term.
- D. The treasurer will be elected in the even-numbered years for a two-year term.
- E. All officers will serve their term or until they are replaced.
- F. A majority vote of those in attendance shall constitute an election.

Section 4. Executive Board. The Chippewa County 4-H Leaders, Inc. Executive Board shall consist of:

A. President

- 1) Shall have served as President-Elect the previous year.
- 2) The term of office shall be one year.
- 3) Shall preside at all regular and special meetings of the Chippewa County 4-H Leaders, Inc. and Executive Board.
- 4) Shall also be an ex-officio member of all standing or appointed committees
- 5) Shall work with UW-Extension 4-H Youth Development Agent to act on Chippewa County 4-H Leaders, Inc. situations which in their judgment would not require board action.

B. President – Elect

- 1) Shall preside in the absence of the president and take care of all the duties of the president during the president's absence; and
- 2) Shall become President the 2nd year of office

C. Secretary

- 1) Shall keep accurate record of the proceedings of all Board and Leaders meetings;
- 2) Shall send minutes of meetings to President and UW-Extension Office within seven working days after a meeting;
- 3) Shall work with Extension Office in getting out and receiving all correspondence and communications necessary.

D. Treasurer

- 1) Maintain accurate and up-to-date financial records of the Chippewa County 4-H Leaders, Inc.;
- 2) Collect and disperse funds as authorized by the Chippewa County 4-H Leaders and as requested by the 4-H Agent.
- 3) Give financial report at all Leaders meetings and upon request.
- 4) As an authorized signature of Chippewa County 4-H Leaders he/she can not draw funds without a letter of approval signed by the 4-H Youth Development Agent under the direction of the Chippewa County 4-H Leaders.
- 5) Provide leadership for Chippewa County 4-H Leaders Council Budget
- 6) Take the leadership to have the audit take place by September 30

E. Past-President

- 1) Shall be an active member of the Executive Board; and
- 2) Shall be called upon for advice and provide continuity to the overall functions of the Leaders and Board;
- 3) Shall represent Chippewa County at the North Central Regional Leaders Forum and the Fall Forum sponsored by the Wisconsin State Adult Leaders Council.

Section 5: County Committee and/or Club Mediation

- 1) Club/County Committees need to make every reasonable effort to resolve conflict within their organization.
- 2) Once all reasonable efforts are exhausted, the disgruntled parties may request an Executive Leaders Council Board meeting to hear the dispute.
- 3) The mediation request must be made within one month of the conflict.
- 4) If any Executive Leaders Council Board members are involved in the county committee and/or club dispute they are excused from all meetings relating to mediation.
- 5) Executive Leaders Council will make every effort to schedule a mediation meeting within two weeks of the request.

- 6) All parties involved are invited to represent their side of the conflict.
- 7) Executive Leaders Board will send written documentation of the decision within two weeks of the meeting.
- 8) The decision of the Executive Board is the final decision.

Article VI – Meetings

Section 1. Governing. All Meetings shall be governed by Roberts Rules of Order.

Section 2. Informal Action Without Meeting. Any action required or permitted by the Bylaws or any provision of law to be taken by the Executive Board may be taken without a meeting if consent in writing, setting forth the action so taken, shall be signed by all the Executive Board members entitled to vote on such action. Such consent shall have the same force and effect as a unanimous vote at a meeting.

Section 3. Chippewa County 4-H Leaders Council.

- A. Chippewa County 4-H Leaders does consist of one representative vote per each active club in the County.
- B. The Council shall hold a minimum of seven meetings per year. A calendar will be approved by the Leaders Council at the September meeting. The president may call an additional meeting at any time and shall do so upon the demand of the majority of the officers.
- C. The Executive Board may call special meetings.
- D. The agenda shall be set in cooperation with the 4-H Youth Development Agent and the President.
- E. The agenda shall be made available to all Council Representatives three days prior to the meeting date.
- F. In the event of cancellation the meeting will be rescheduled in accordance with Article VI, Section 3.B.

Section 4. Executive Board

- A. Any member of the Executive Board may call for a meeting of the Board.
- B. All members of the Executive Board shall be notified at least 24 hours in advance.
- C. A quorum shall consist of at least three voting members of the Executive Board.

Article VII – Capital Structure

Section 1. Dues. Each club will contribute a total of \$4.00 per member per year to the Chippewa County 4-H program.

- a. \$1.50 per member will be contributed to the Wisconsin 4-H Foundation each year by the Chippewa County 4-H program.
- b. \$1.00 per member will be put towards the accident insurance account.
- c. \$1.50 will be held for 4-H programs in Chippewa County. (Clubs will be billed after March 1st of each year for the number of members enrolled.)

Section 2. Income. All contributions, gifts, and earnings from group efforts shall be income to the Chippewa County 4-H Leaders Council.

Section 3. Net Earnings. Any net earnings remaining after payment of all operating costs and expenses, together with reasonable and necessary reserved may be retained by the Council as an unallocated surplus.

Section 4. Fiscal Year. The Fiscal year of the Chippewa County 4-H Leaders Council shall end on June 30.

Article VIII – Audit

Section 1. At the close of each fiscal year, or at such time as the Board shall determine, the books and accounts shall be carefully examined by a qualified auditor with a written report prepared for the full Chippewa County 4-H Leaders Council.

Article IX – Committees

Section 1. Composition. Each committee shall consist of at least (3) three members. With each committee meeting at least once each year with the meeting being called by the 4-H Youth Development Agent or committee chair. A member may serve on more than one committee. Members may volunteer for more than (1) one year.

Section 2. Objectives. The objectives of the committees are to assist and plan for the development of the area indicated in the committee's title, and report to the Leaders meeting at least once a year or as appropriate. An annual financial statement must be submitted by October 1st for any committee holding their own financial account.

Section 3. Key Committees: Such as, but not limited to, the committee areas as listed in the attachment.

Section 4. Special Committees. Special Committees may be appointed by the president when authorized by the Council or the Executive Board.

Article X– Financial Policy

All funds are to be used to support educational programs and training for youth 4-H members and adult 4-H volunteers. The organization shall be non-stock and no dividends or pecuniary profits shall be declared to the members thereof.

Section 1. Offices and committee position are voluntary and non-compensary. It is assumed that persons serving in these positions are donating their time and incidental personal expenses for the good of the organization or 4-H. All extraordinary personal expenses must be approved by the Chippewa County 4-H Leaders before payment.

Section 2. The President and one other member of the board may release funds up to \$50.00. Any non-budgeted expenditures over \$50.00 must be approved by the Council before payment.

Section 3. All unused funds must be returned to the Extension Office within 10 days after the event with required receipts.

Section 4. The Treasurer shall maintain a savings and a checking account. The President shall have authority to sign checks in the Treasurers absence.

Section 5. An annual budget must be developed and prepared at the April Executive Board meeting and approved at the May Leaders Council meeting.

Section 6. Bills and invoices must be submitted in a timely fashion with appropriate payment request form. Expenditure request forms must include receipts and itemized list of expenditures. All money received must be accompanied by a receipt. Sales tax will not be reimbursed.

Article XI– Amendments – By-Laws

Section 1. The by-laws of this organization may be amended by a two-thirds (2/3) majority of votes cast at any regular meeting of those present and voting.

Section 2. The proposed amendments to the by-laws shall be sent from the Cooperative Extension Office to all members of the organization in a newsletter prior to the meeting at which it is to be acted upon.

Article XII– Notification

Section 1. A copy of bylaws, list of officers, map of 4-H club locations by area, and committee membership shall be distributed annually to the Council members and Club Advisors.

Article XIII – Dissolution

Upon dissolution of the Chippewa County 4-H Leaders, Inc., any assets remaining shall be conveyed to a 4-H Youth Development Program or 4-H Youth Development Foundation as selected by the affirmative vote of the majority of members entitled to vote.

Key Committees

- A. *Archery Committee* – will organize and provide for a county-wide youth archery program; they will work in cooperation with the 4-H Shooting Sports Committee.
- B. *Arts and Crafts Festival Committee* – will provide leadership for educational activities for members, including a countywide festival for youth, ~~and assist youth in entering the 4-H Talent Explosion.~~
- C. *Camp Committee* – will organize 4-H camping programs as needed, included selecting counselors and camp staff. They will assist in training of the camp staff and attend camp whenever possible.
- D. *Cloverbud/Exploring Committee* – will organize special activities to meet the needs of members including activities such as day camp and the fair.
- E. *4-H Dog Program* - will organize and conduct dog obedience programs.
- F. *4-H Forest Committee* – will provide leadership to oversee the management of the Chippewa County 4-H Forest, located in the Howard Township.
- G. *Home and Family Committee* – will identify needs and design educational opportunities for youth and adults in the home and family project areas. The committee coordinates the Clothing Revue and Foods Revue and related activities at the fair.
- H. *Chippewa County/FFA Youth Horse & Pony Program* – to provide a friendly and safe environment where youth can learn and network while also providing opportunities to learn about horse care, management and riding skills.
- I. *Older Member Trip Committee* – will organize a process and select older 4-H members for the Arts Leadership Lab, Citizenship-Washington Focus, 4-H Exchange, and Wisconsin 4-H and Youth Conference trips. They will also assist in identifying and selecting adult leaders to accompany trips. The committee will assist in planning hosting of 4-H Exchange trips.
- J. *Photography Committee* – will provide leadership for educational activities for members, including a county-wide festival for youth, and assist youth and leaders in entering the ~~4-H Talent Explosion and the~~ State 4-H Photography Contest.
- K. *Quality Meat Animal Program* – a) to create an incentive for 4-H and FFA members to carry a livestock project including records; b) provide an educational experience for all participants that will enhance personal growth, and expand their knowledge of the livestock industry; c) provide the participant with an economic return; however, the participant is to be kept informed that this may not present a realistic financial picture of the livestock industry; d) provide participants with a monetary income that should be used to further expand or upgrade their livestock projects or allow for furthering the participant's education; e) provide an educational learning-by-doing activity that allows the participant to take a livestock project from an infant animal to the final marketable product.
- L. *Recognition and Record Book Committee* for 4-H members and Leader Recognition Program – will determine for recognition for 4-H members in Chippewa County including 4-H Graduation Program, Key Award Presentation, and selecting outstanding record books.
- ~~M. *Safety Camp Committee*, will organize an educational Safety Day Camp program for youth and families.~~
- ~~N.M. *Shooting Sports Committee* – will organize and provide a county-wide youth shooting sports program.~~
- ~~O.N. *Snack Bar Committee* – (leaders fund raising for county 4-H programs) will conduct operations during the Northern Wisconsin State Fair.~~

Formatted: Font color: Red, Strikethrough

Formatted: Font: Italic, Font color: Red, Strikethrough



YOUTH EXPO ACTIVITY STATIONS

Youth Participant

2016 Wisconsin State Fair



Youth are encouraged to participate in the Activity Stations program at Wisconsin State Fair. Activity Stations are located in the Youth Expo Hall and feature free hands-on activities for young Fairgoers. Interested youth participants are needed to lead the Activity Stations and interact with young Fairgoers. Youth participants are also provided with opportunities to further develop their leadership and communication skills while having fun meeting new friends at the Fair. Potential activity stations include: visual arts, juggling, science and technology, aerospace, face painting, agriculture and more.

A. Qualifications

- 12-19 years of age at time of Fair.
- Be flexible, work well in new situations and enjoy new experiences.
- Interested and informed participant willing to promote youth organizations at the Fair.
- Have interest in a variety of Boy Scout, Girl Scout, FFA and 4-H related projects.
- Enthusiastic and dependable.
- Have no other responsibility at Wisconsin State Fair during assigned period.
- Relate well with fellow youth participants, facilitators and coordinators.
- Be a member in good standing with an approved youth organization. These organizations include, but are not limited to, Wisconsin 4-H, Wisconsin FFA, Boy Scouts and Girls Scouts.

B. Responsibilities

- Carefully read all pre-Wisconsin State Fair correspondence.
- Discuss Youth Expo organizations and various project-related activities.
- Assist Fairgoers with Activity Station programs.
- Participate in all designated program activities throughout the day.
- Present a positive image of the activity station to the public.
- Report any suggestions or concerns to the Activity Station Coordinator.
- Selected youth cannot participate in other State Fair activities during the same time period as the Activity Stations program is a full day experience (8:30 am to 8 pm) with breaks built into the schedule.

C. Participation Fee

All participants must pay a \$25 per night Youth Center Fee and complete a Tommy G. Thompson Youth Center Registration form to receive a wristband which covers admission, lodging and three meals per day in the Youth Center. Do not send in Youth Center fees with the application form. Youth Center fees will be submitted with the final registration materials sent in June.

D. Participation Premium

Youth participating at Wisconsin State Fair for one day will receive a premium of \$30. Youth who participate two or more days will receive a premium of \$40.

For more information on Activity Stations contact Lisa Talen, Youth Expo Coordinator, at (414) 750-0872 or by email at lisa.talen@wistatefair.com.



YOUTH EXPO ACTIVITY STATIONS
Youth Participant
2016 Application Form



I am willing to serve as a Youth Participant for the 2016 Wisconsin State Fair Activity Stations. I have read and understand the qualifications and responsibilities for this position. I understand submission of an application does not guarantee acceptance. *Acceptance will be determined by Wisconsin State Fair on a first come, first serve basis.*

Activity Station applicants will submit all applications directly to Wisconsin State Fair. Applicants must be a member in good standing with an approved youth organization in order to be eligible to participate. These organizations include, but are not limited to, Wisconsin 4-H, Wisconsin FFA, Boy Scouts and Girls Scouts. *Wisconsin State Fair will verify participant eligibility with the respective youth organization prior to acceptance.*

Name: _____

County/Chapter/Troop: _____

Address: _____

City: _____ WI Zip Code: _____

Phone: () _____ Grade: _____ Age: _____

Email: _____ T-shirt size (circle): S M L XL XXL

Gender (circle): Male Female Have you previously participated in the State Fair Activity Stations? ☐ Yes ☐ No # of years: _____

How did you hear about the Activity Stations program? _____

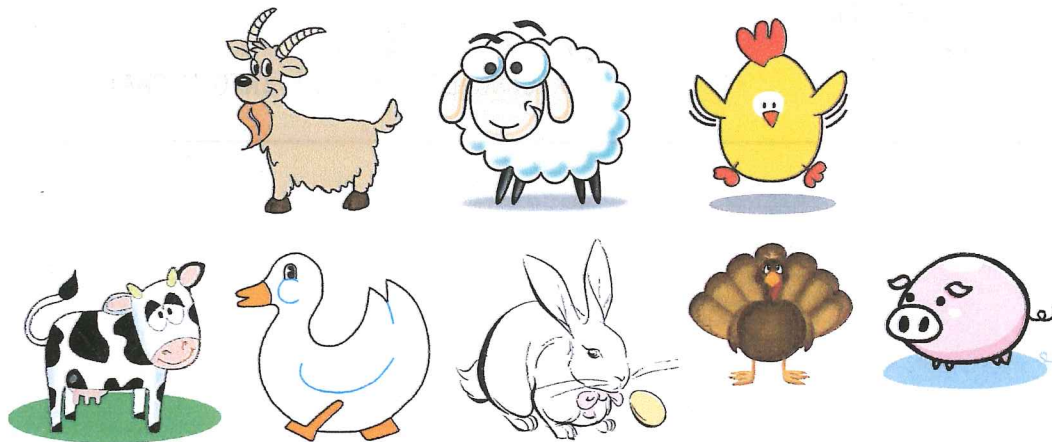
Rank, in order of preference, the period you wish to attend. "1" = first choice, "2" = second, etc.
(Please indicate if you are interested in attending more than one period.)

_____ 1 st Period	_____ 2 nd Period	_____ 3 rd Period	_____ 4 th Period
August 4 - 6	August 6 - 8	August 8 - 11	August 11 - 14

Youth Applicant's Signature _____ Date _____

Must be postmarked by June 1, 2016 and sent to:
Wisconsin State Fair Park, Lisa Talen - Youth Expo Activity Stations,
640 S. 84th St., West Allis, WI 53214

Ladysmith 4-H/FFA Small Animal Swap



Saturday, May 21, 2016

6:00am – 10:00am

Rusk County Fairgrounds - Ladysmith
Event will be held RAIN or SHINE

•All animals will be checked for proper testing documentation!

Must have copy of current Pullorum testing to turn in and all sheep & goats require scrapie eartag!

No dogs can be permitted due to a fairground regulation! SORRY!

Concessions on grounds

Sponsored by:

The Rusk County 4-H Small Animal Project Committee

For more information call: (715) 290-0948 or (715)322-4488

Northwest Region

4-H Agility

Fun Match

Saturday, August 6th, 2016

Held at: Smarty Paws Agility
4175 123rd Street
Chippewa Falls WI, 54719



Judging Starts at 10:00 am

*Show facility has padded floor and all approved AKC Equipment.

*All classes will follow Wisconsin State Agility guidelines.

*Dogs must have crate. Please bring lawn chairs

Fees

Advanced Entries: Close July 13th, 2016 \$5.00 per class

Day of Show Entries: Close August 6th 9:30am \$8.00 per class

Make Checks payable: Dunn County 4-H Dog Project

Mail entries/ fees to:

Dunn County UW-Extension

Attn: 4-H Dog Project

3001 US Highway 12E; Suite 102

Menomonie, WI 54751

Match Chairman: Sandy Miller 715-233-3074

Food & Refreshments available

Proof of current Rabies must accompany ALL entries. No dogs allowed without!

Entry Form

Northwest Region 4-H Agility Fun Match

August 6th, 2016 – Chippewa Falls

One Entry Form Per Dog

Fees

Advanced Entries (close 7/13/2016) \$5.00 per class

Day of Show Entries (9:30am on 8/6) \$8.00 per class

Make Checks payable: Dunn County 4-H Dog Project

Total entry fees enclosed \$ _____

Date Received: _____

Please Print

Breed		Sex (Circle One) Male Female
JTT AGILITY CLASS (Circle one)		Jump Height Division (Circle One)
On Leash	Off Leash	4" 8" 12" 16"
Standard AGILITY CLASS (Circle One)		Jump Height Division (Circle One)
On Leash	Off Leash	4" 8" 12" 16"
Advanced Standard AGILITY CLASS		Jump Height Division (Circle One)
Off leash only		4" 8" 12" 16"
DOG NAME		
<i>Proof of Rabies must be attached with ALL entries. No dogs allowed without proof!</i>		

Please Print

Handler _____

4-H Club: _____ County: _____

Address _____

City _____ State _____ Zip _____

Emergency Contact Telephone # __ (____) _____

Email Address _____